

LGA and population density maps of major cities

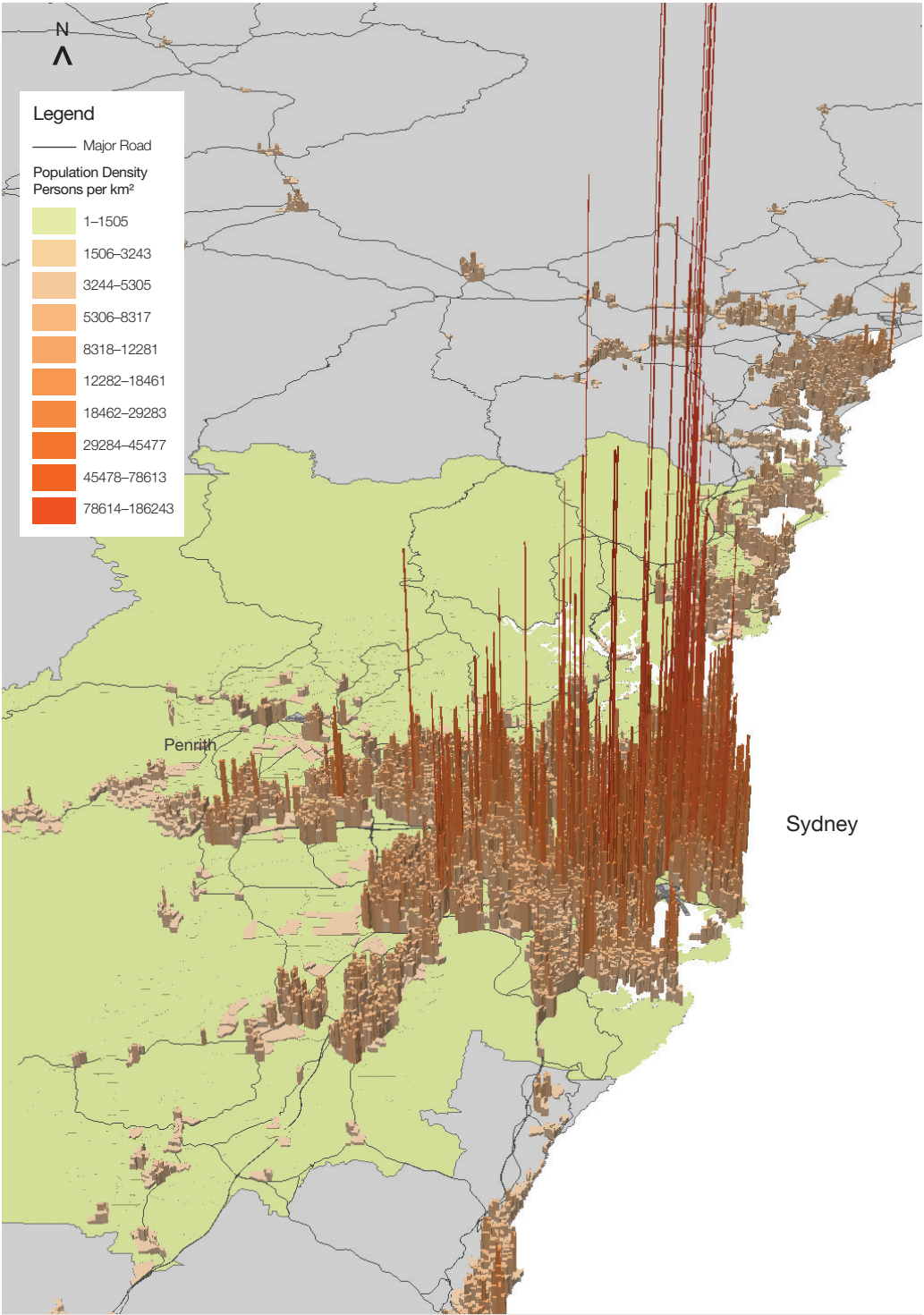
Maps of major cities, local government areas (LGA) and population density

Local government boundaries are continually changing. The maps below represent LGA boundaries in major cities as at 2012.

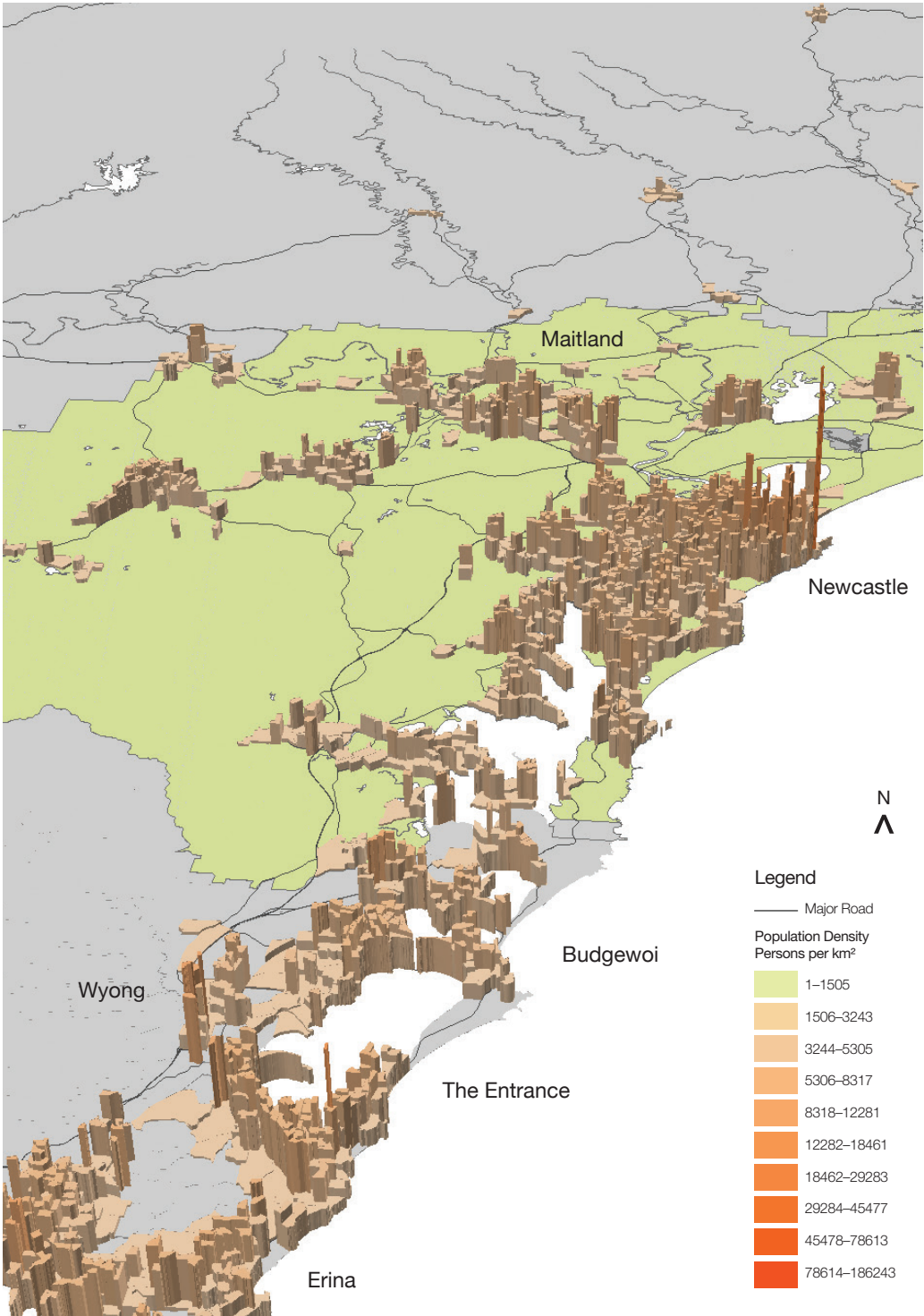
Local Government areas in Sydney, Newcastle and Wollongong



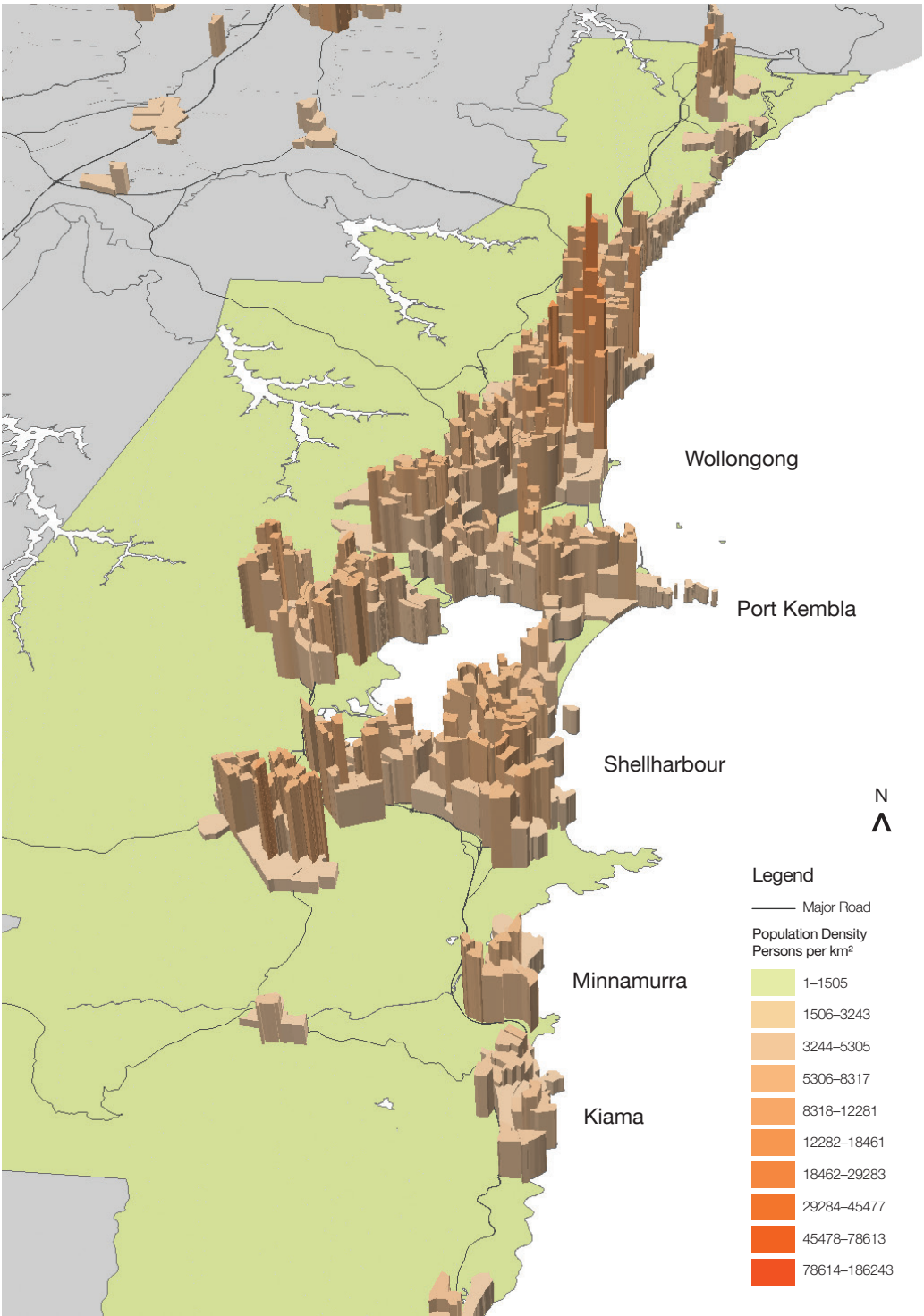
Population density in Sydney



Population density in Newcastle



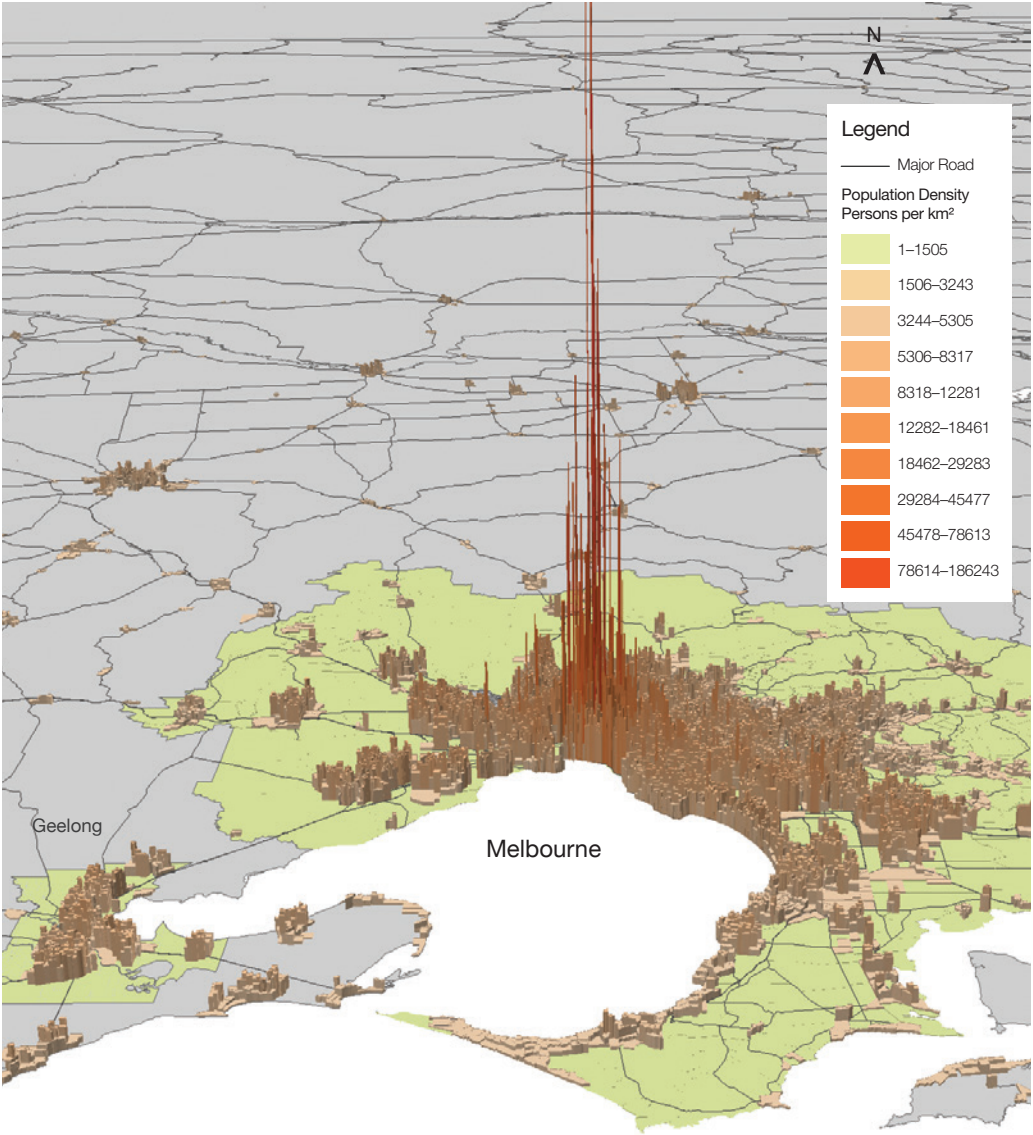
Population density in Wollongong



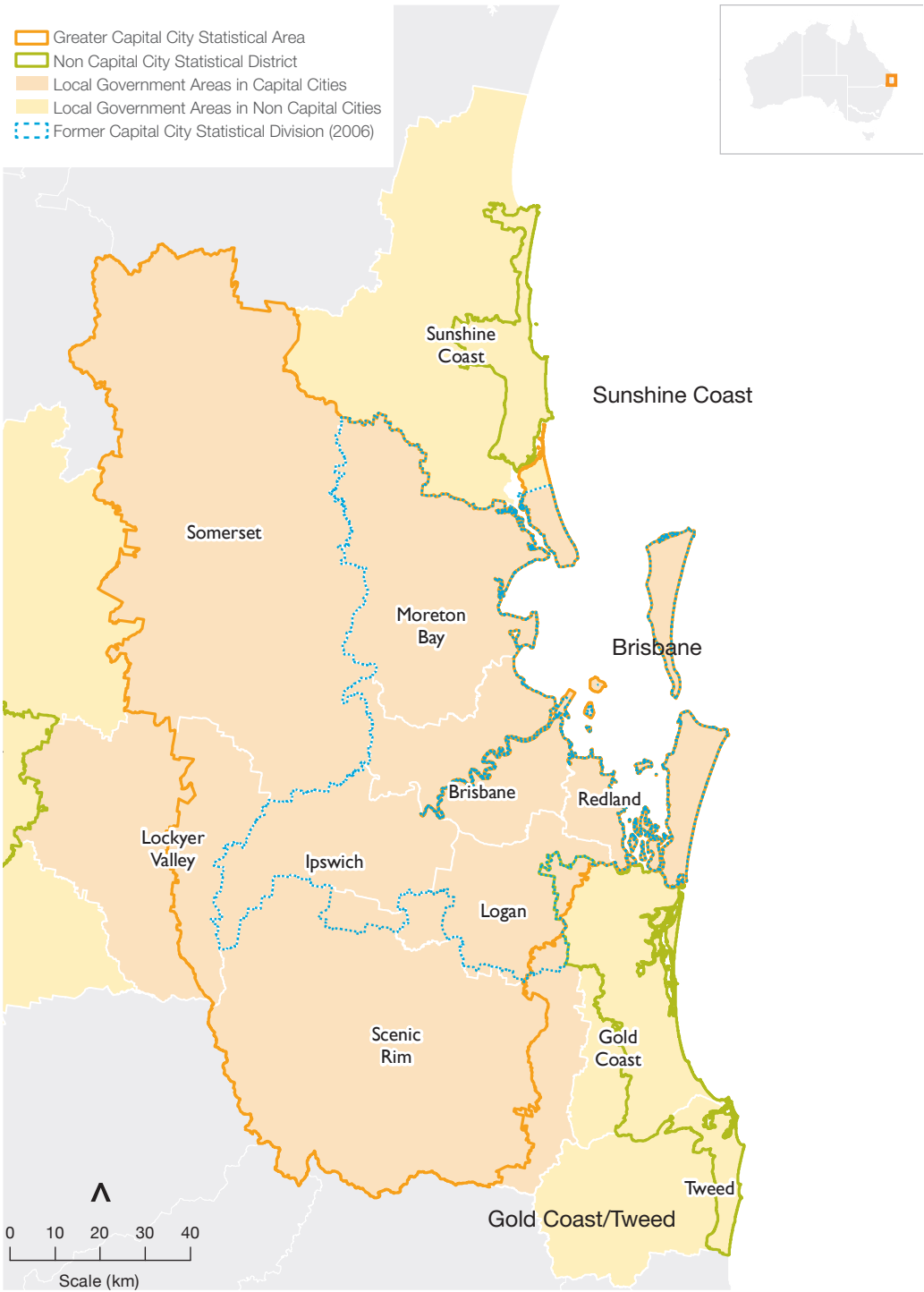
Local Government areas in Geelong and Melbourne



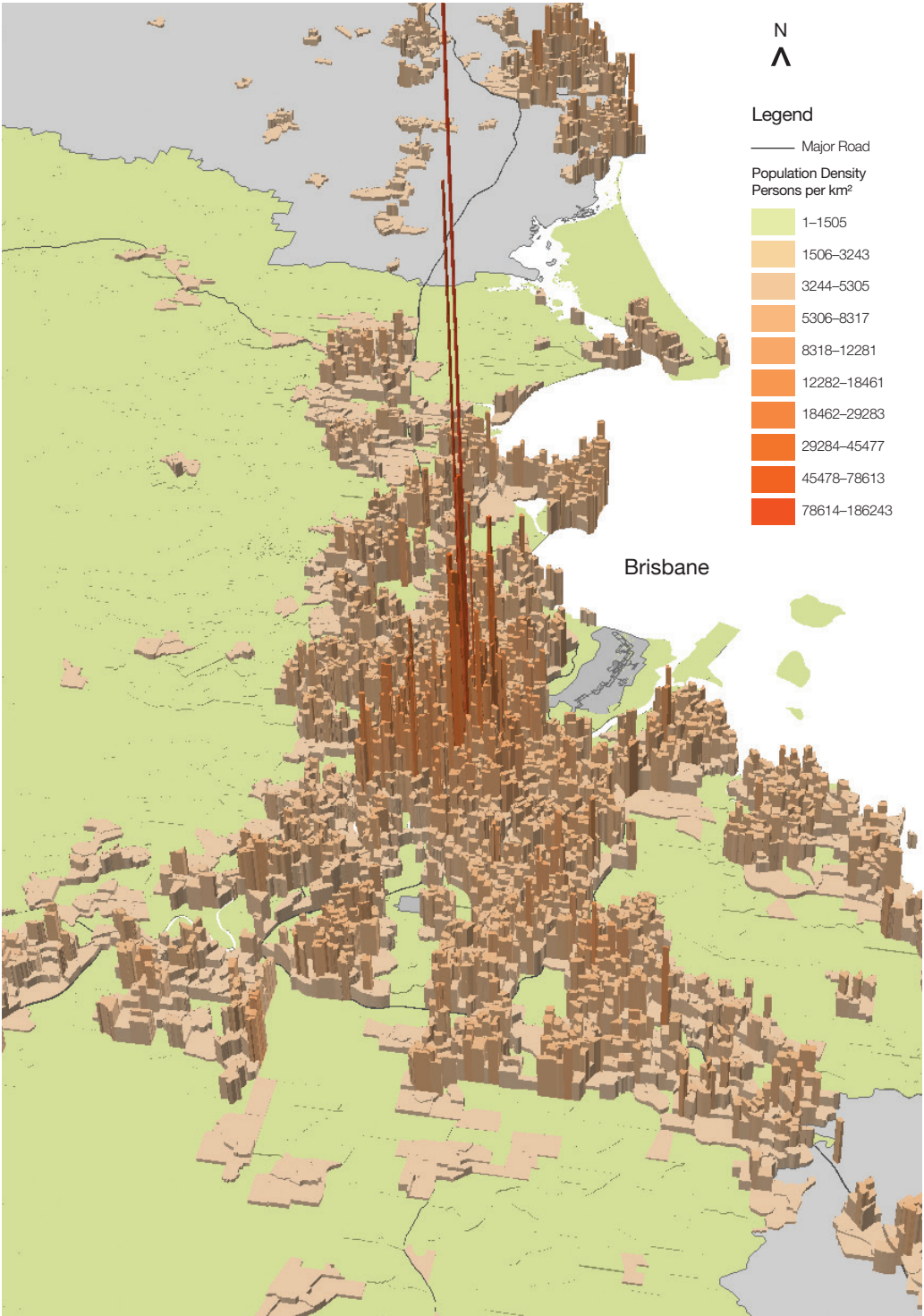
Population density in Geelong and Melbourne



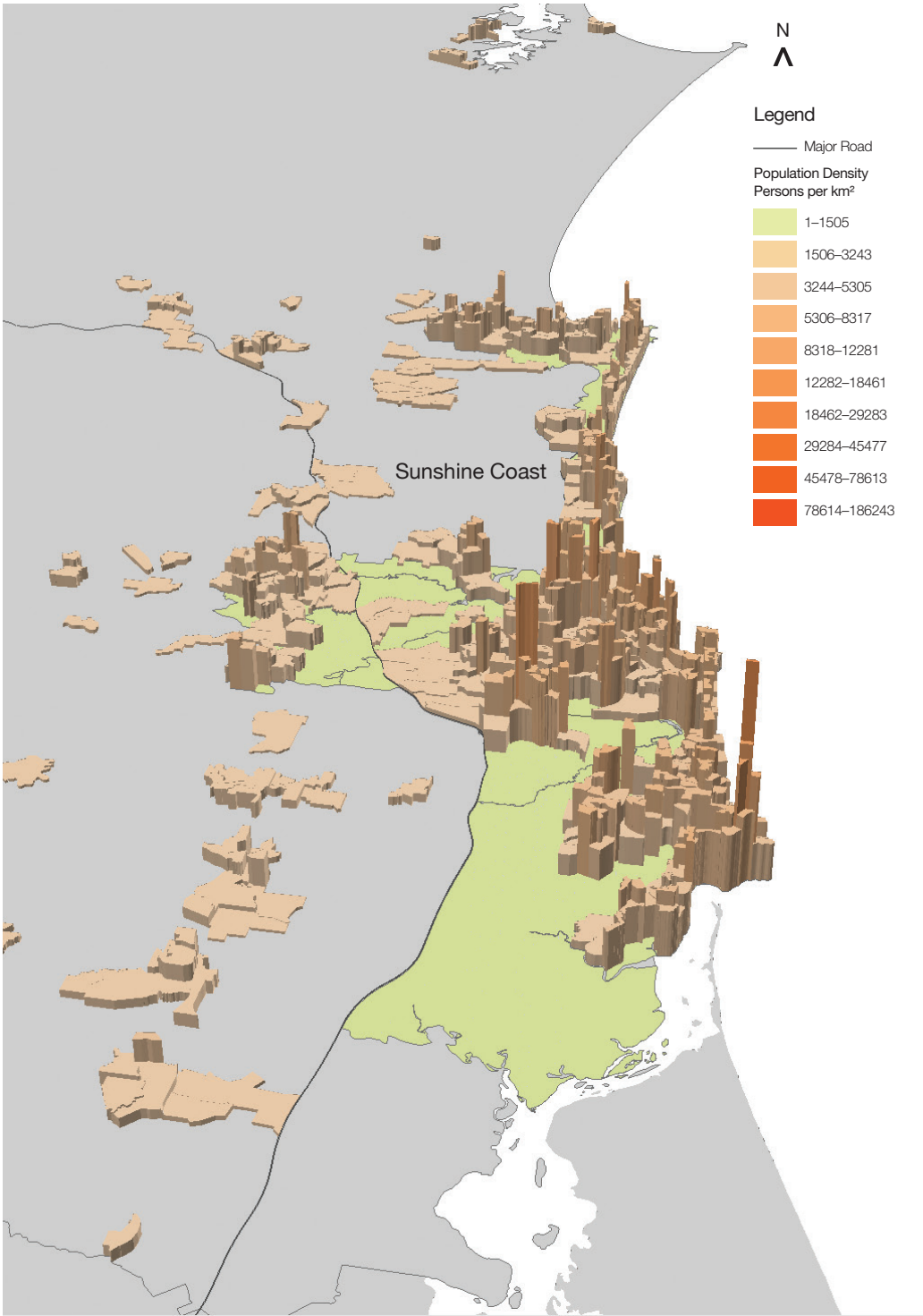
Local Government areas in Brisbane, Sunshine Coast and Gold Coast



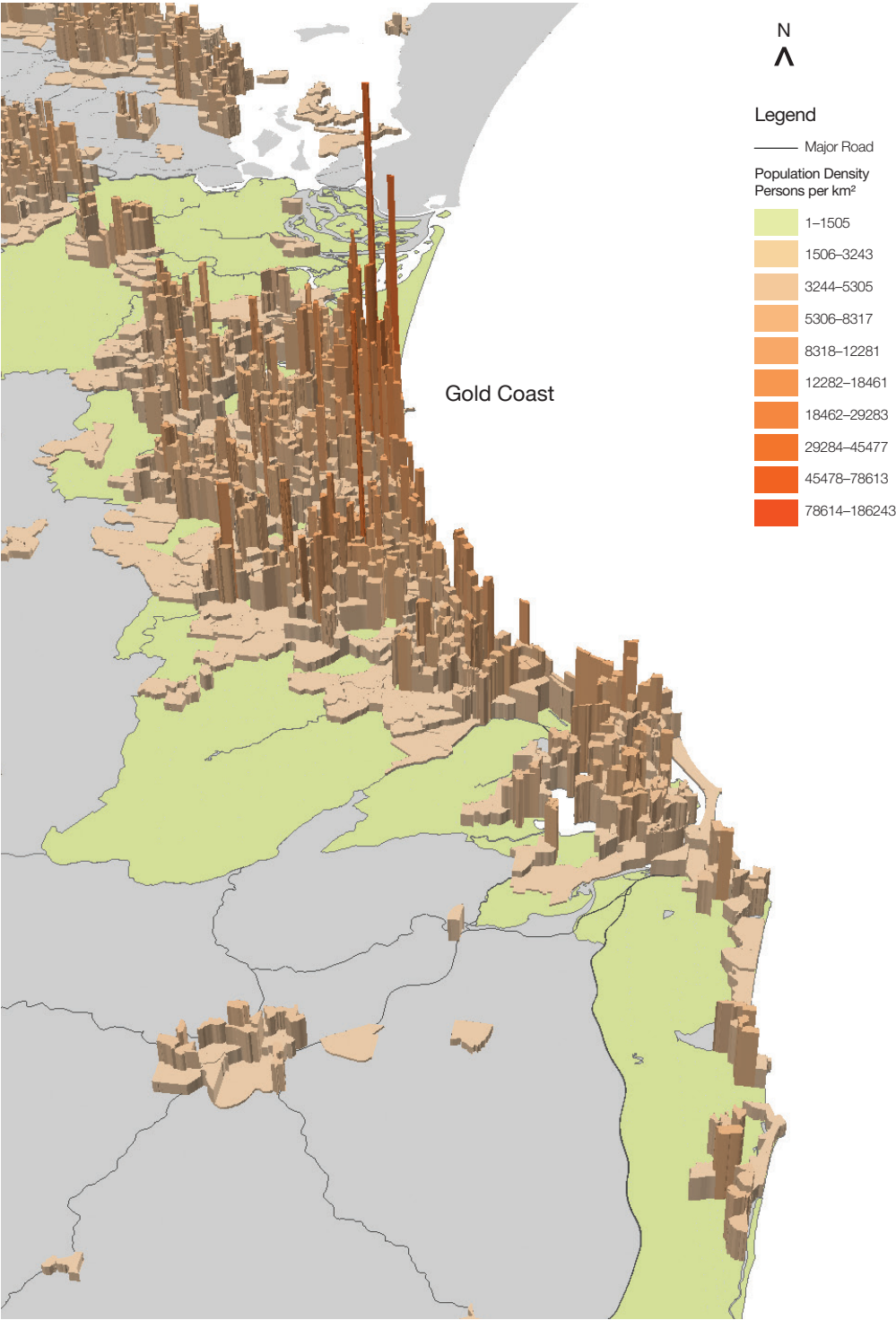
Population density in Brisbane



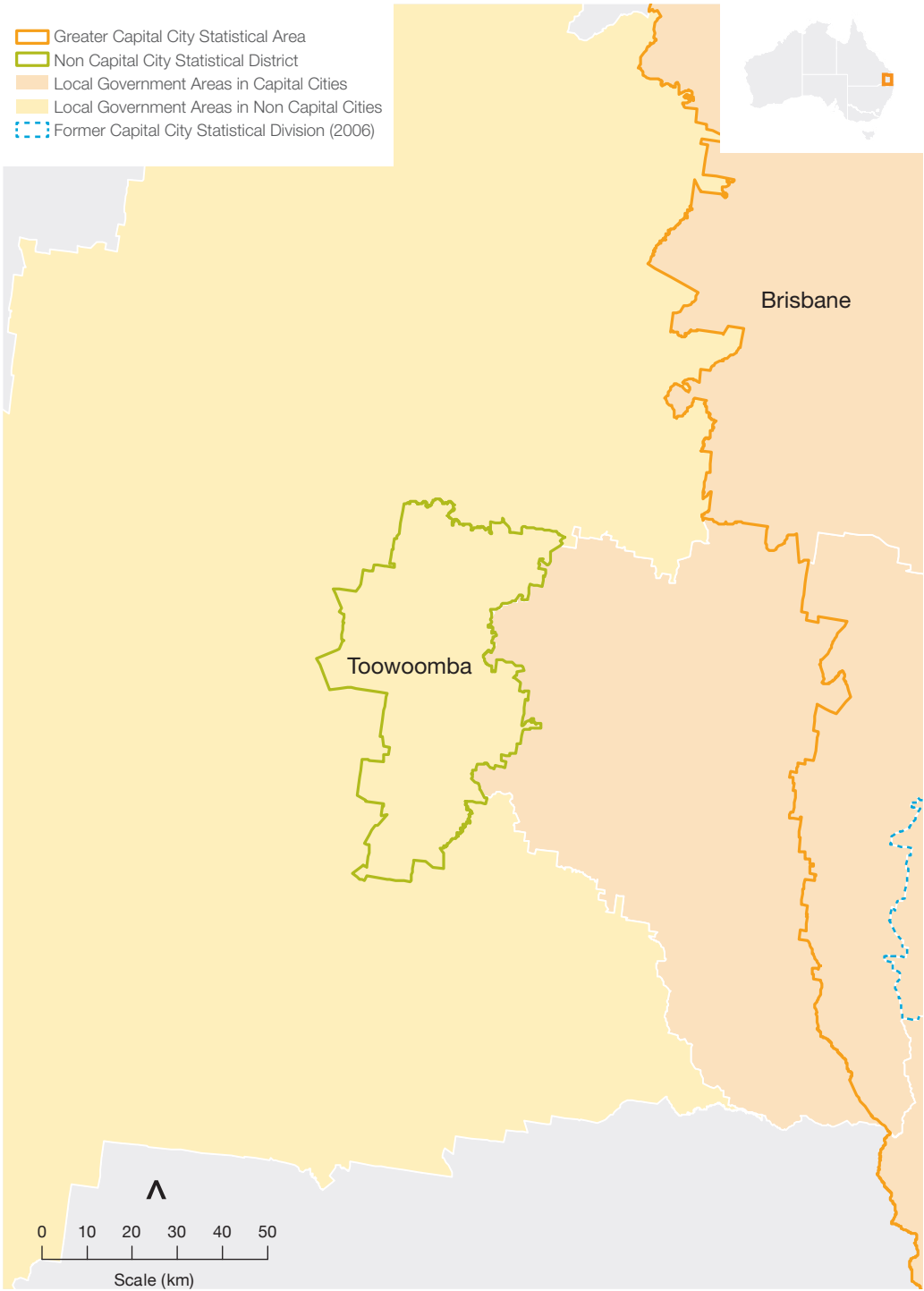
Population density in Sunshine Coast



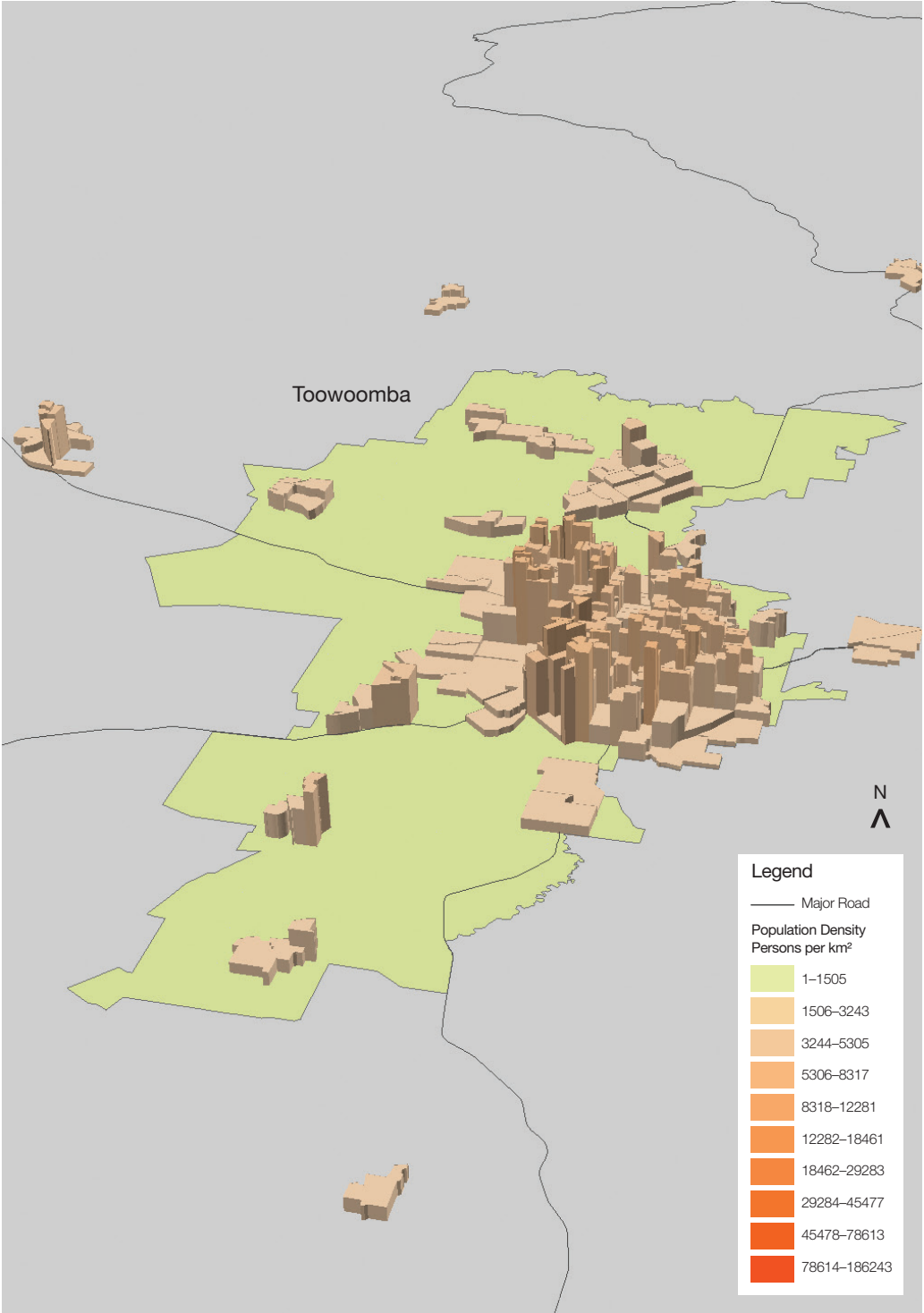
Population density in Gold Coast



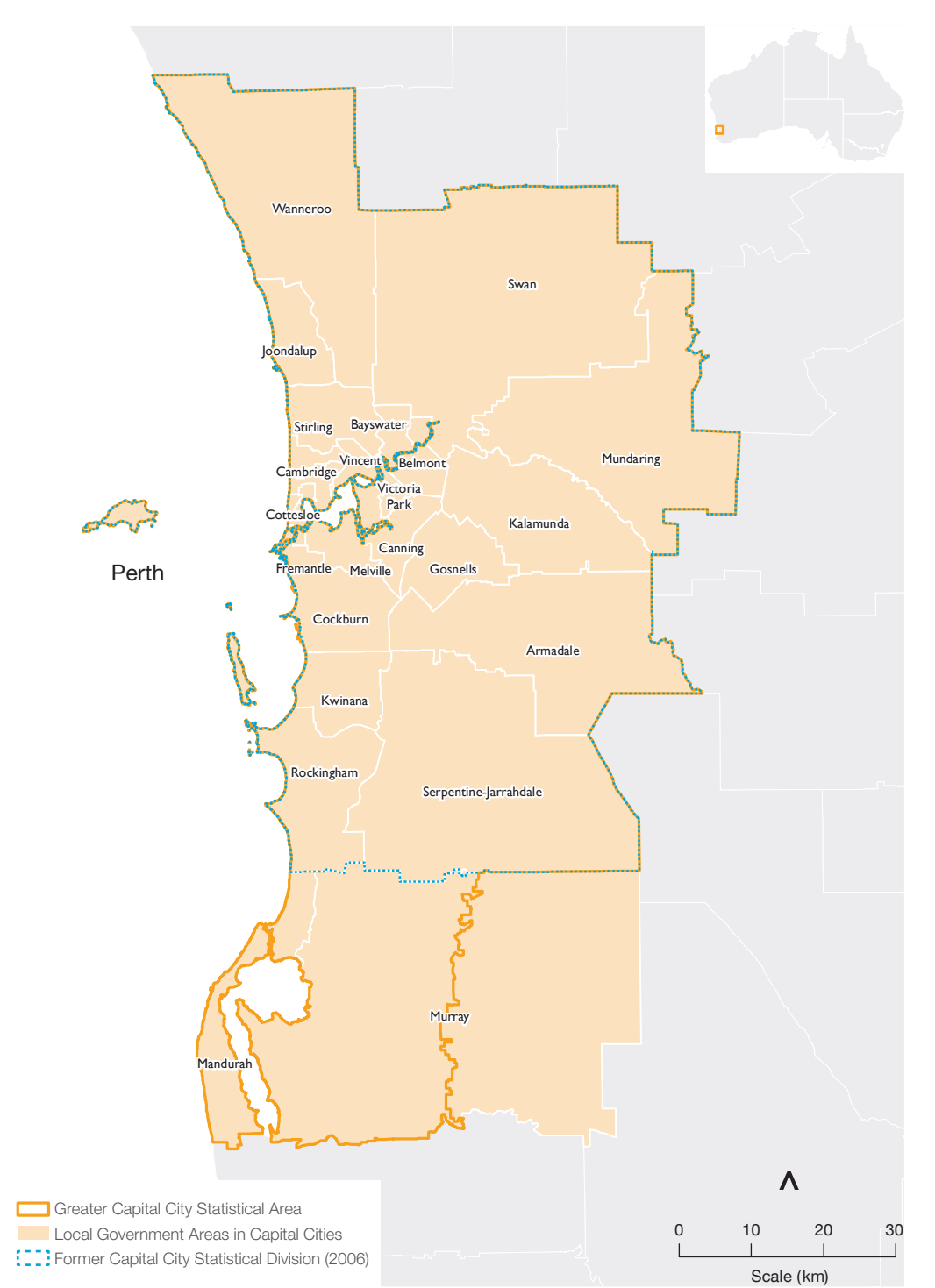
Local Government areas in Toowoomba



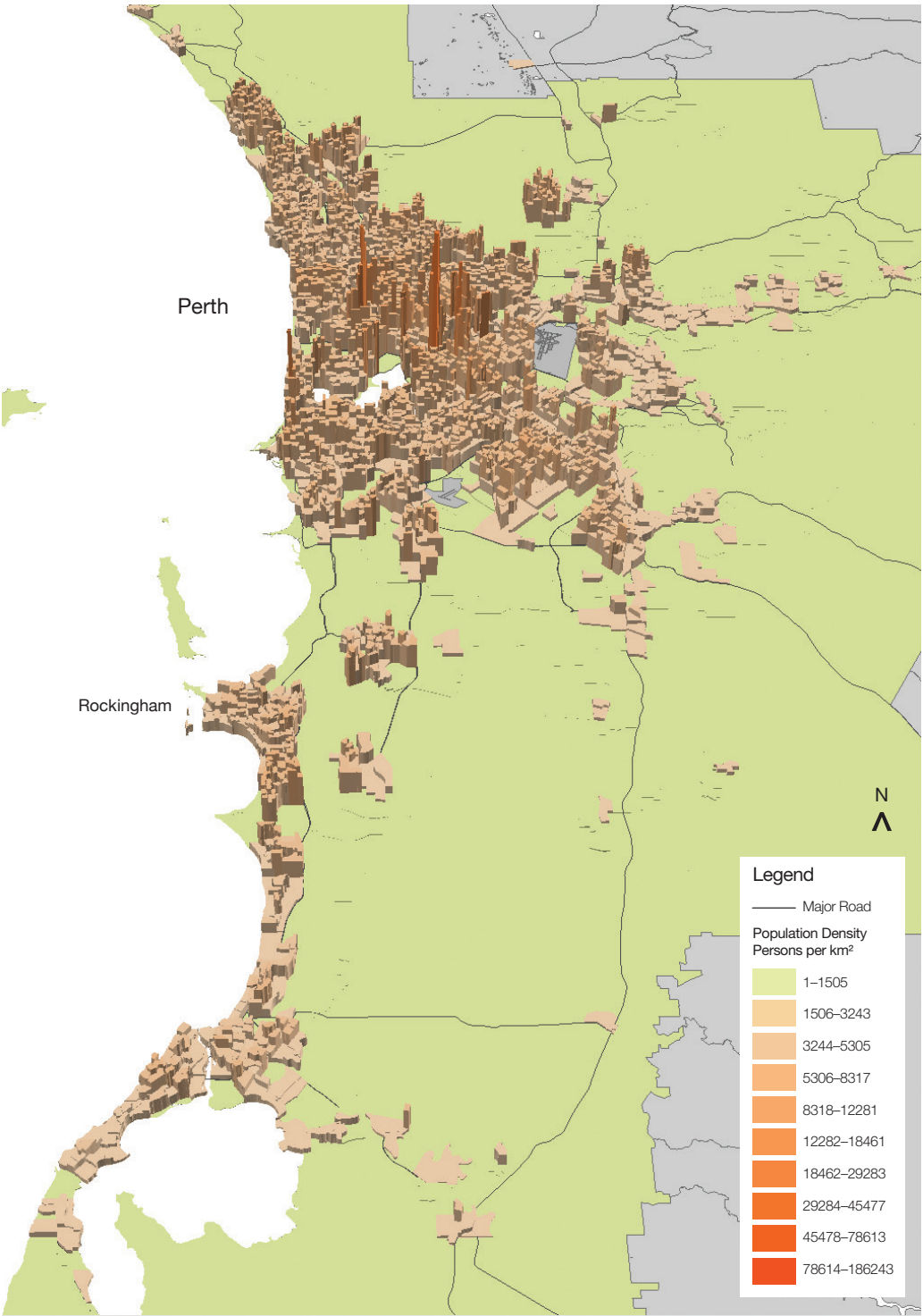
Population density in Toowoomba



Local Government areas in Perth



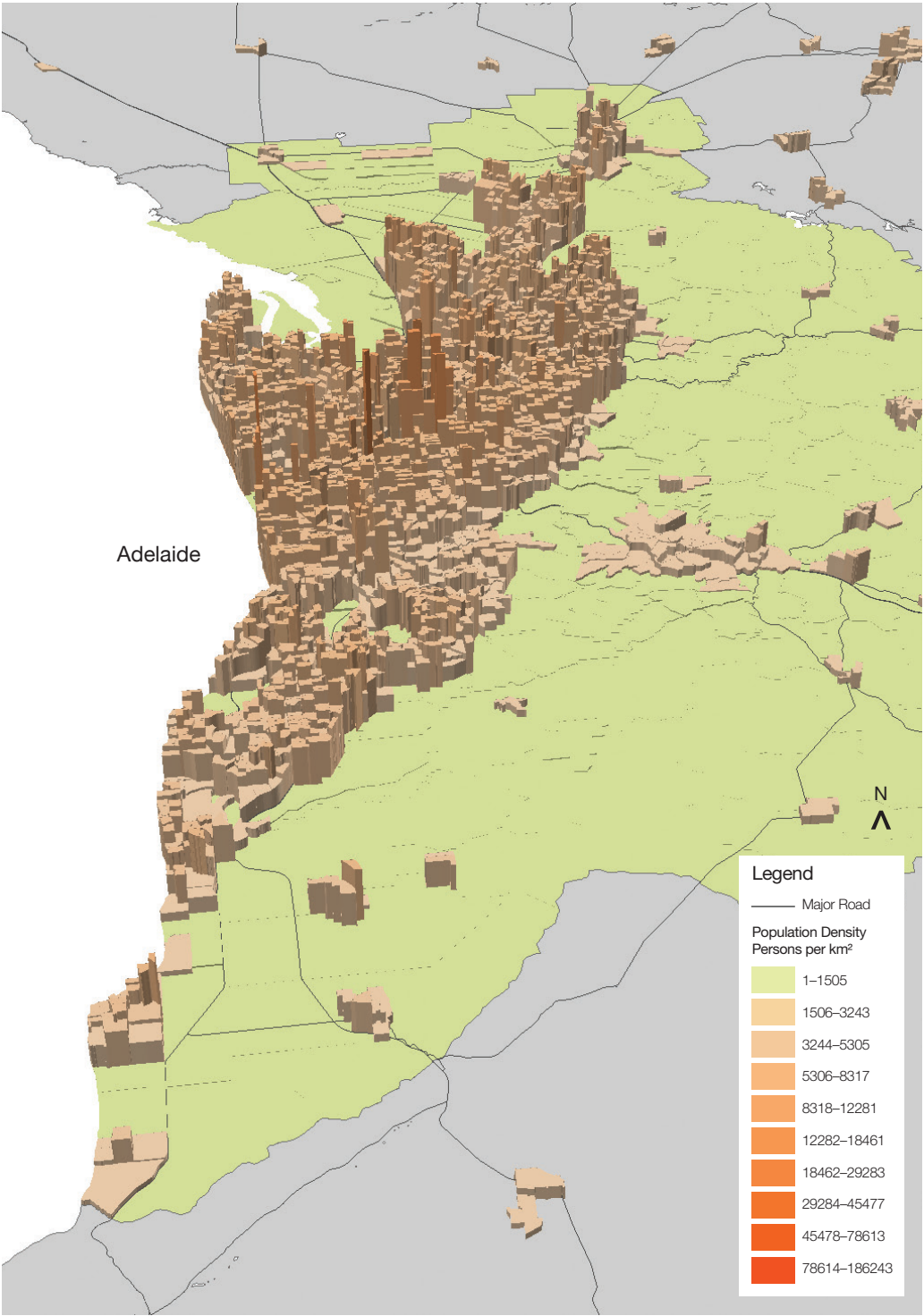
Population density in Perth



Local Government areas in Adelaide



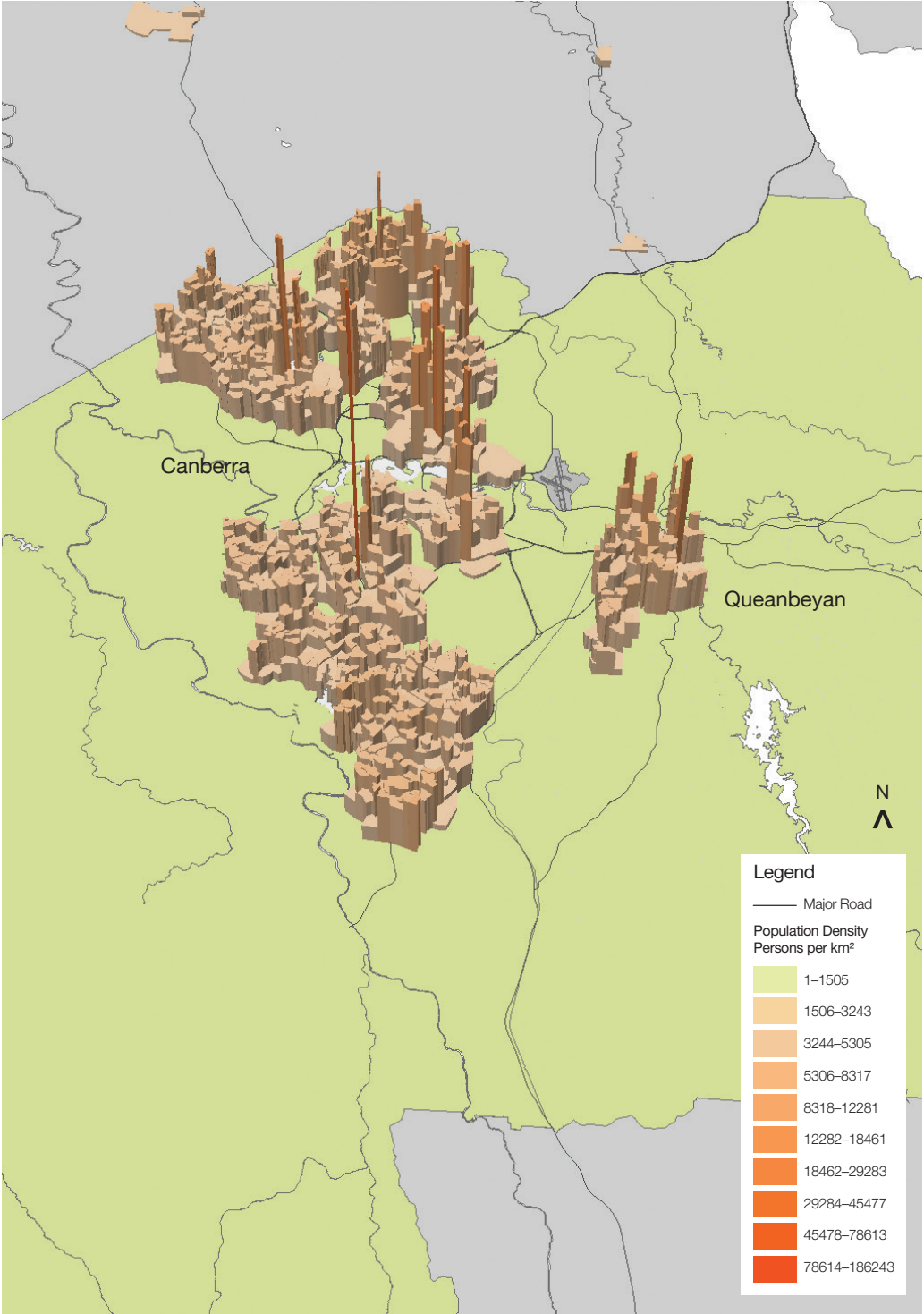
Population density in Adelaide



Local Government areas in Canberra – Queanbeyan



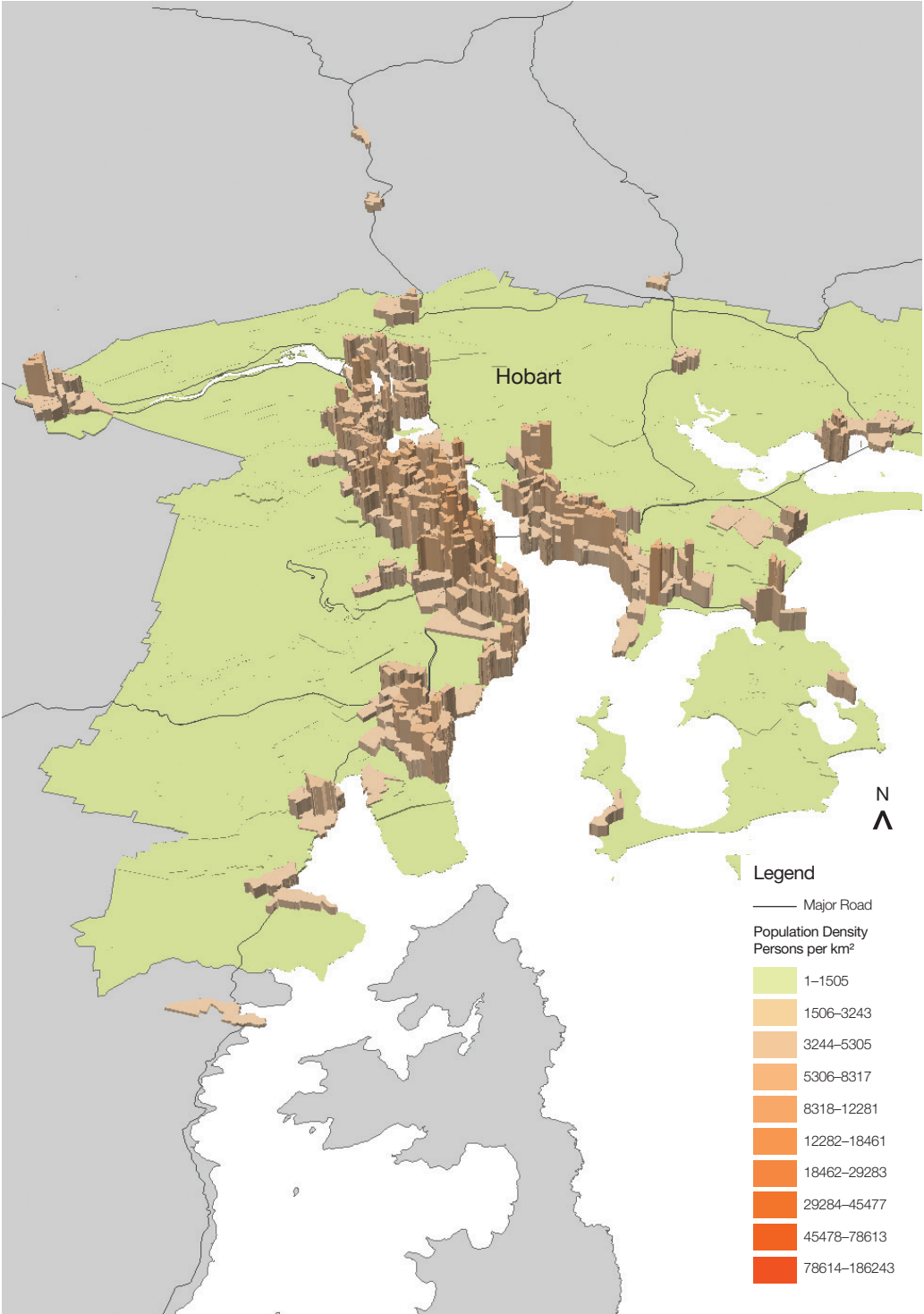
Population density in Canberra – Queanbeyan



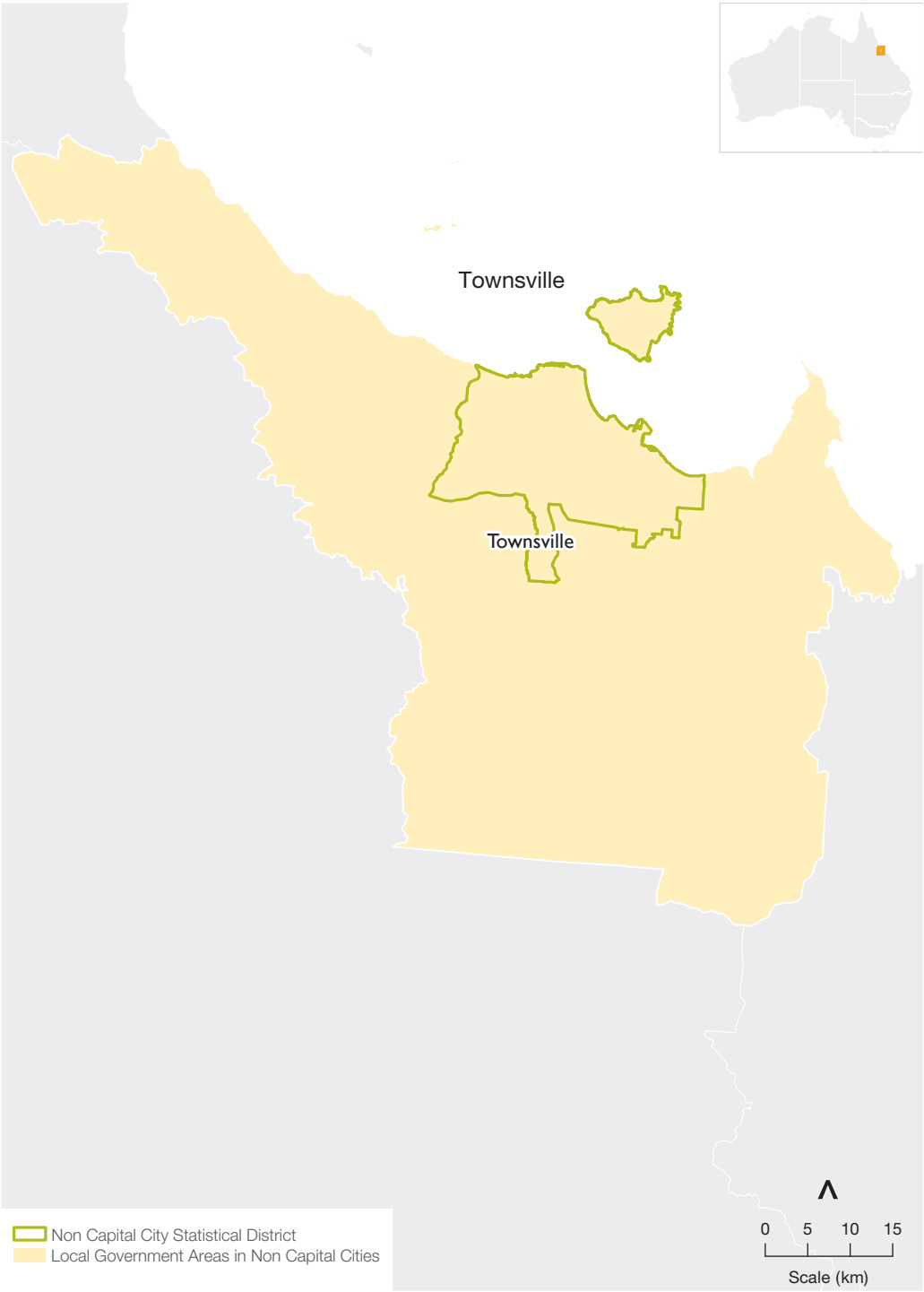
Local Government areas in Hobart



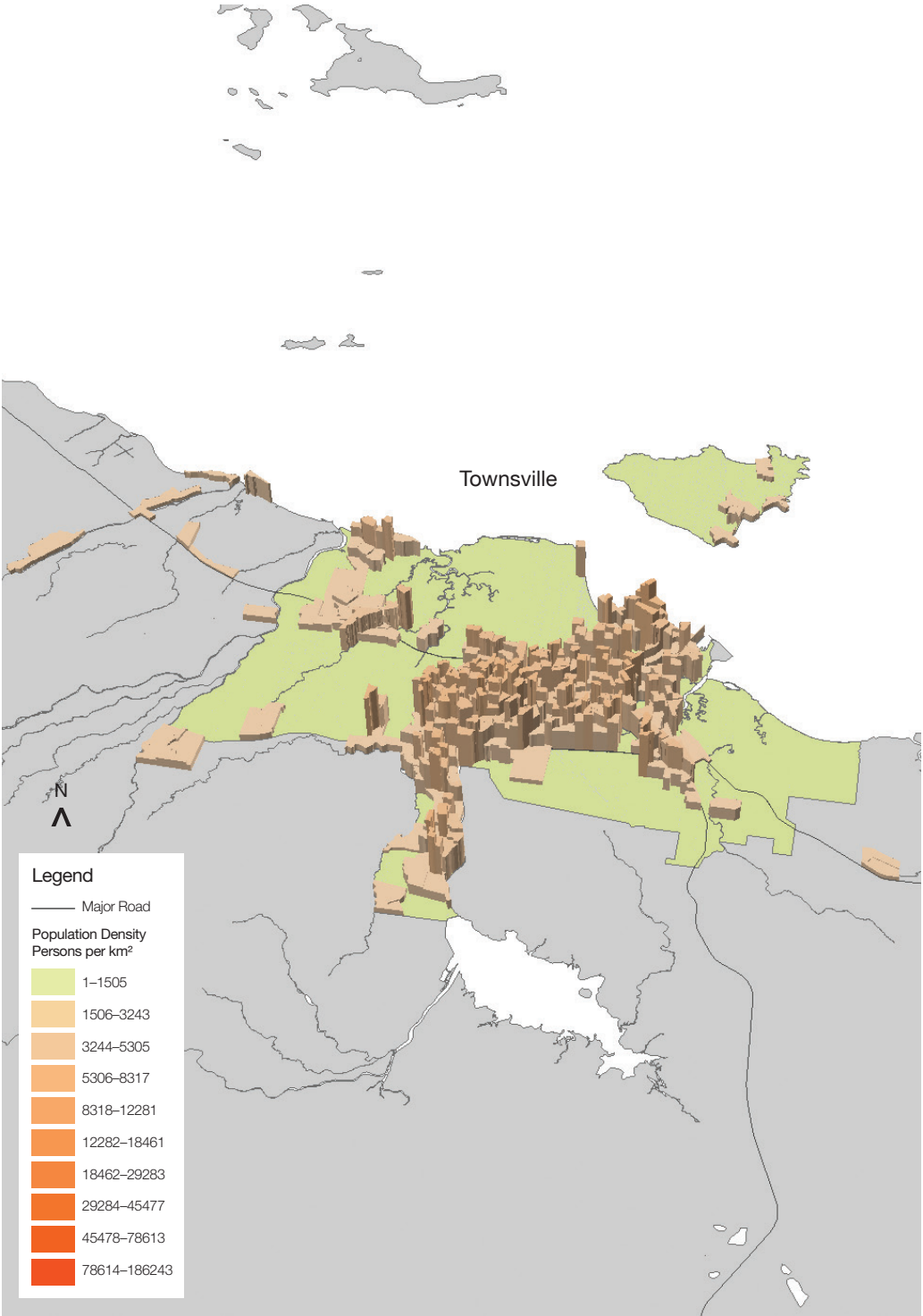
Population density in Hobart



Local Government areas in Townsville



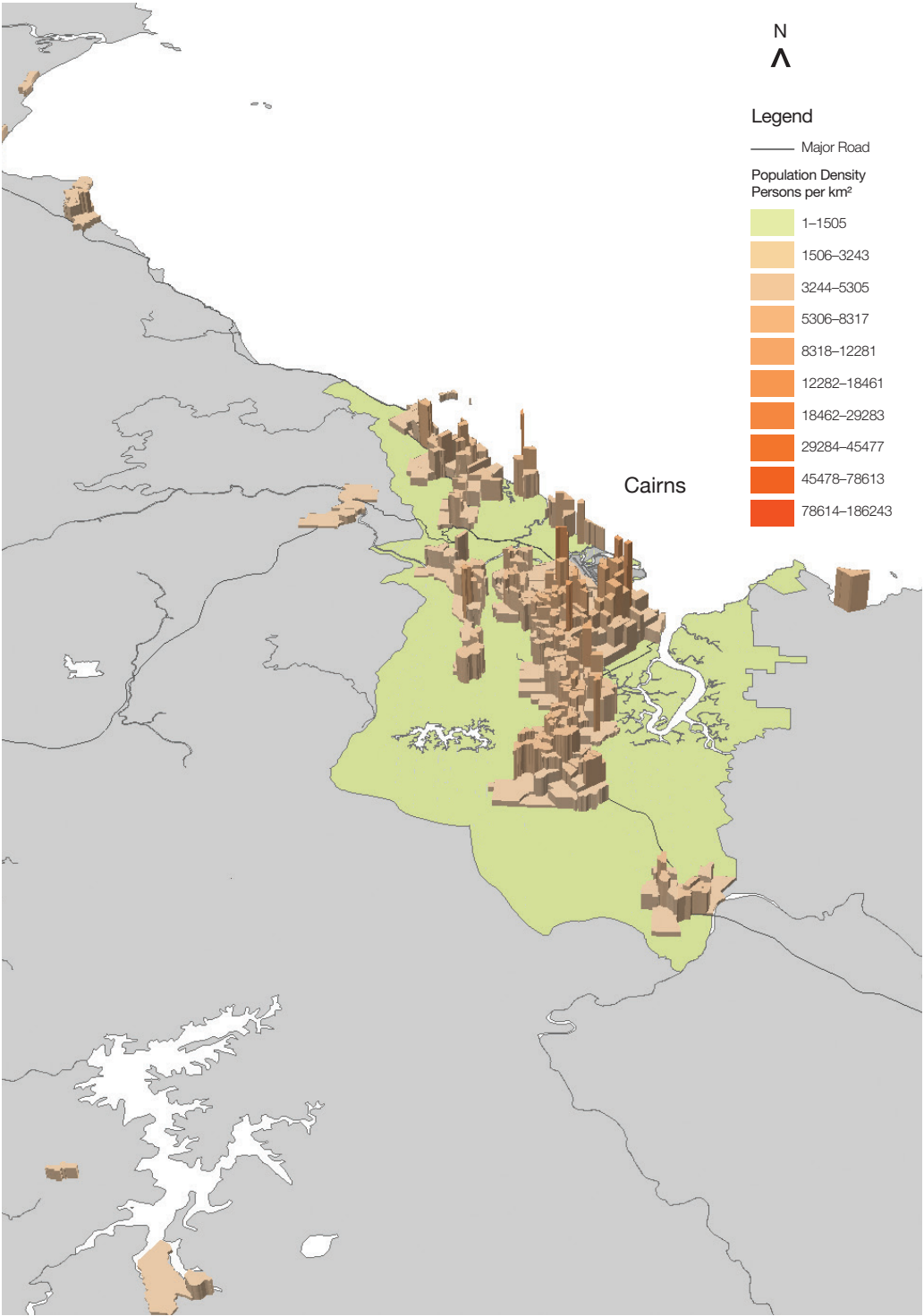
Population density in Townsville



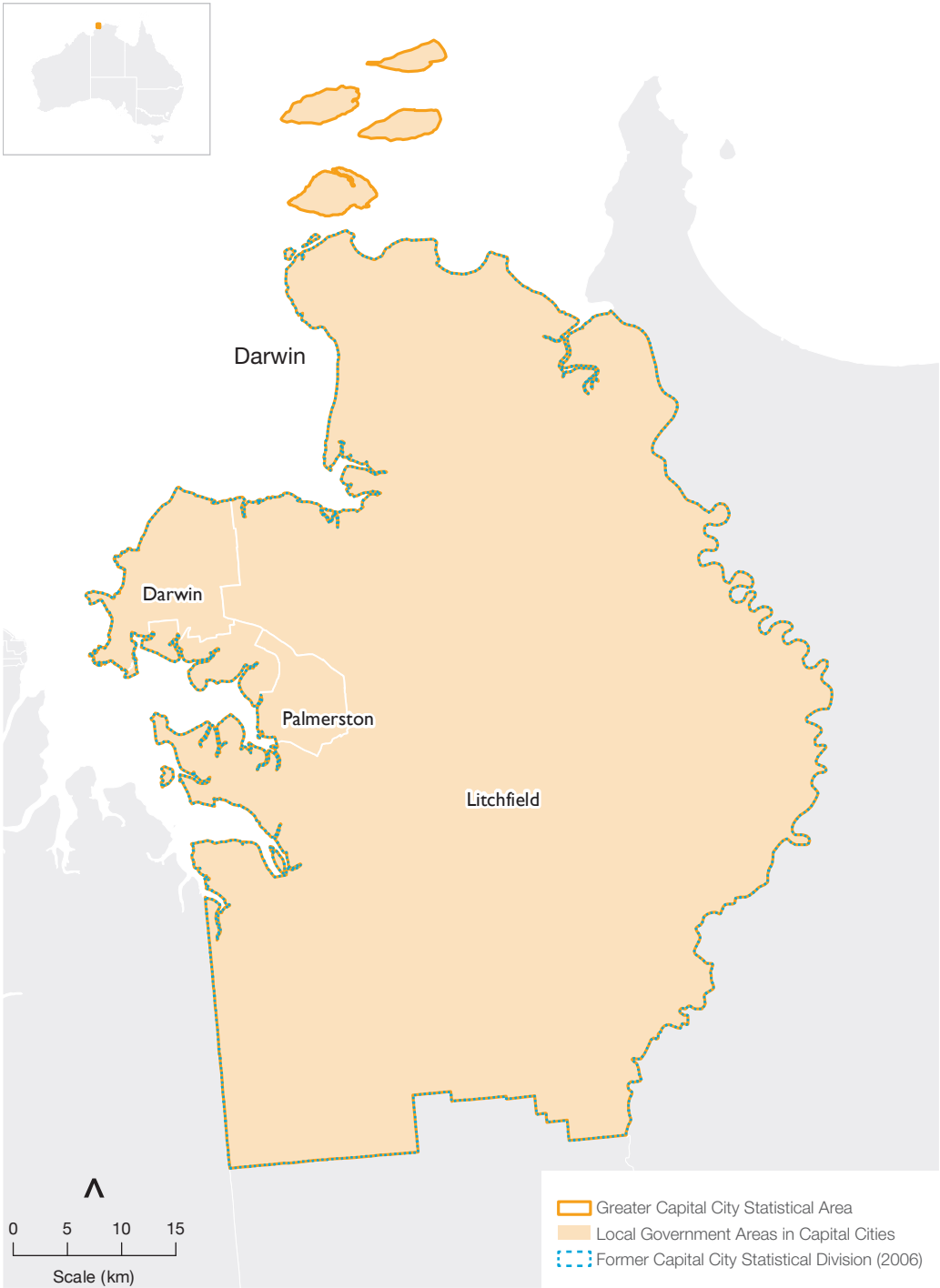
Local Government areas in Cairns



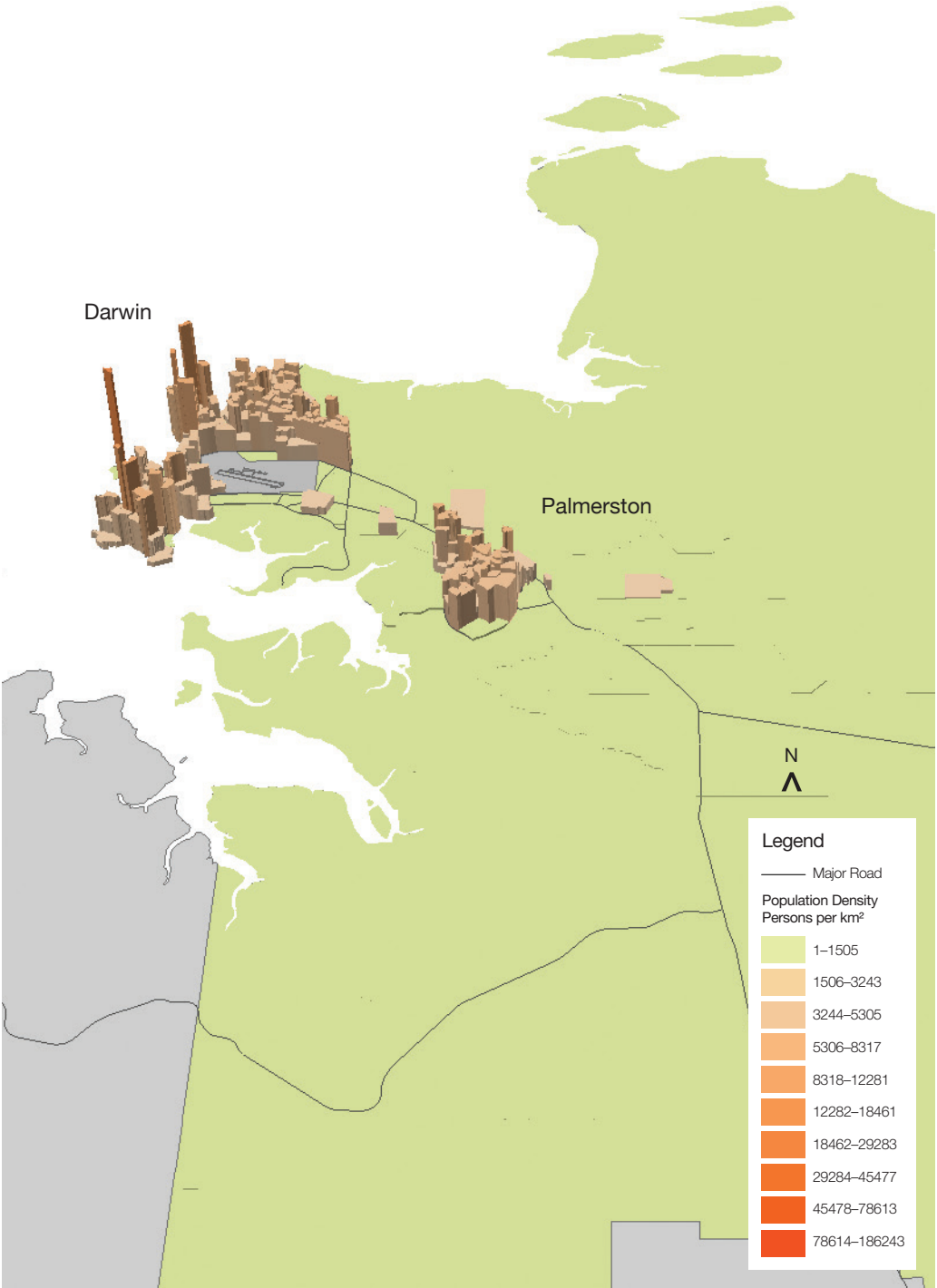
Population density in Cairns



Local Government areas in Darwin



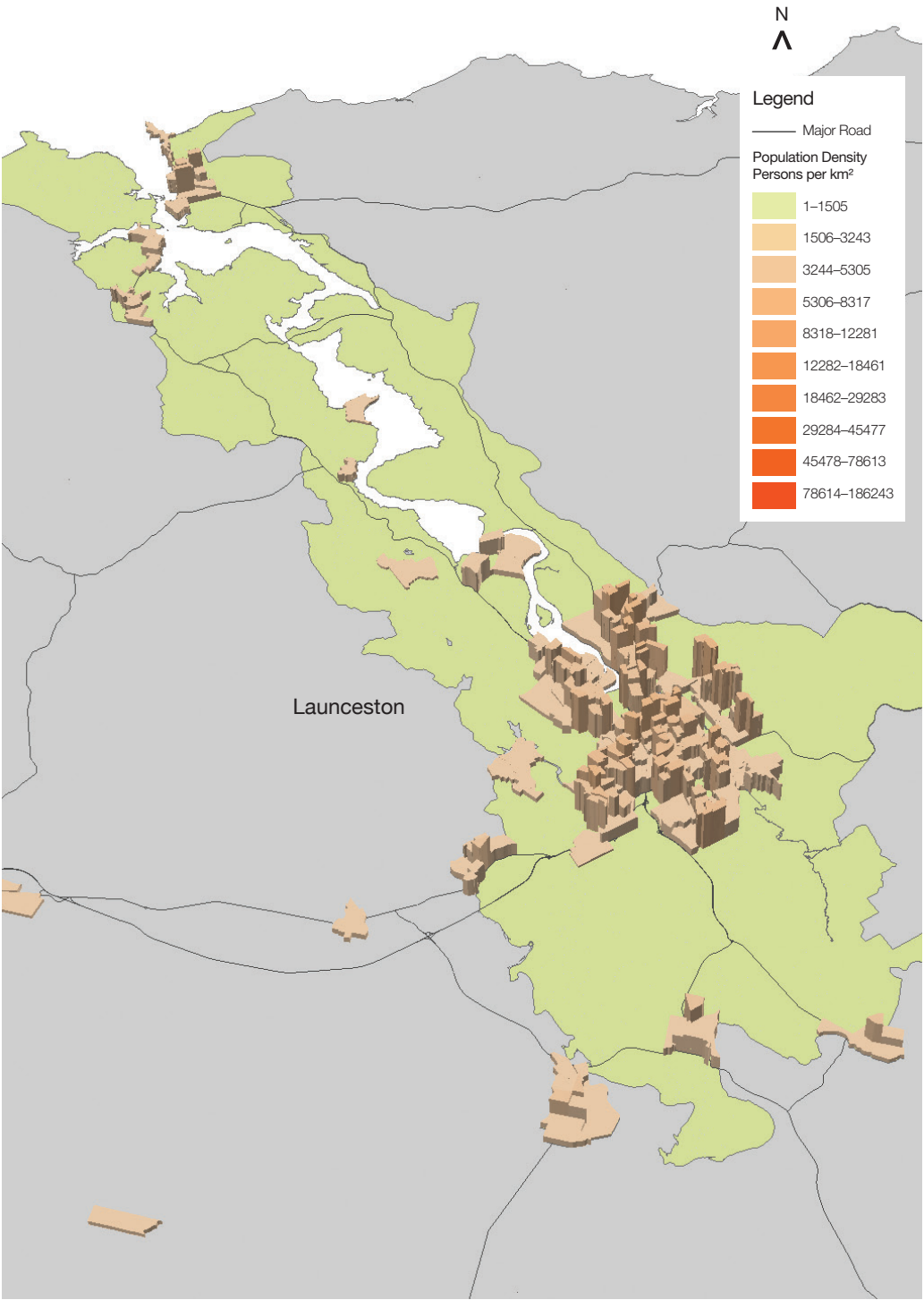
Population density in Darwin



Local Government areas in Launceston



Population density in Launceston



Local Government areas in Albury – Wodonga



Population density in Albury – Wodonga

